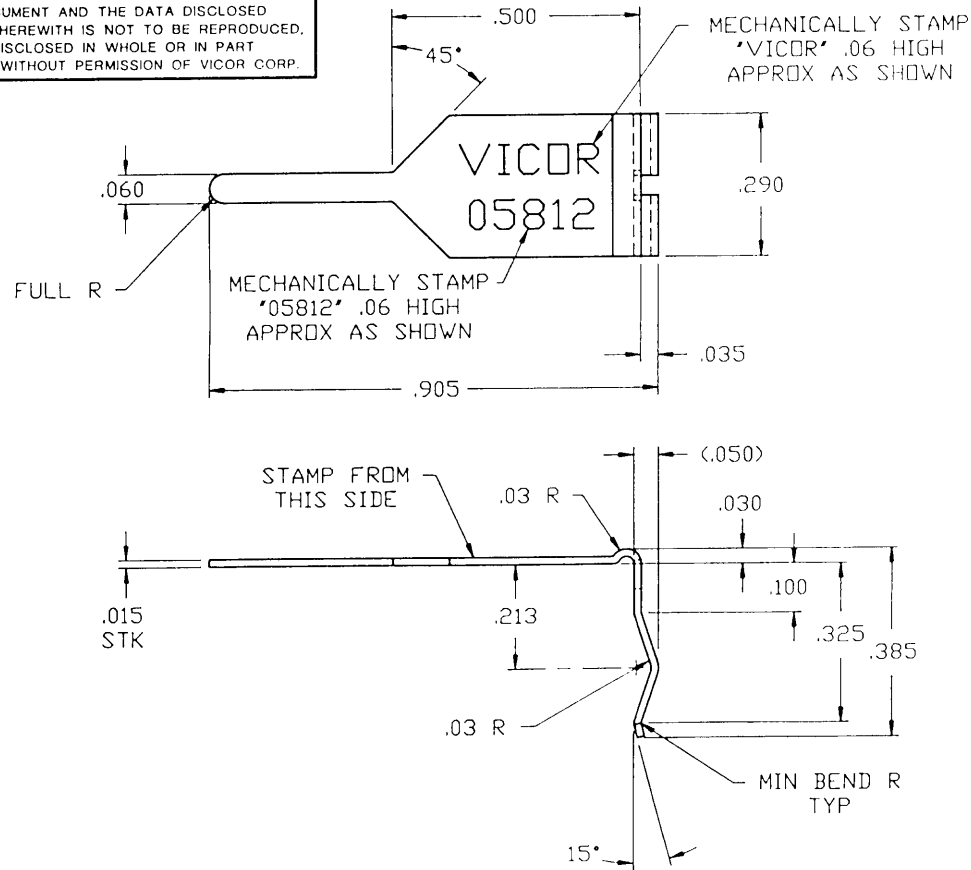


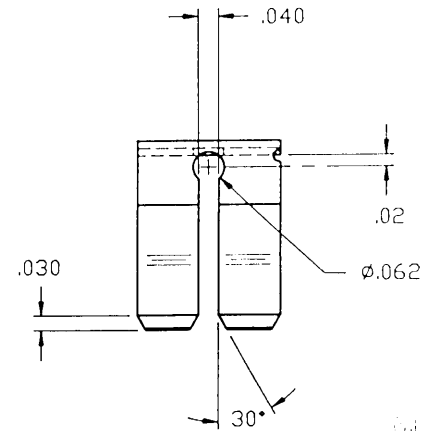
VICOR CONFIDENTIAL

THIS DOCUMENT AND THE DATA DISCLOSED
HEREIN OR HEREWITH IS NOT TO BE REPRODUCED,
USED, OR DISCLOSED IN WHOLE OR IN PART
TO ANYONE WITHOUT PERMISSION OF VICOR CORP.



REV.	DESCRIPTION	DATE	APPROVED
4	RELEASED PER ECO #E910657 CFH	11/25/91	WWP
5	REVISED PER E920018 J.W.	04 FEB 92	JJG

M



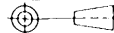
NOTES

1. MATERIAL: 260 BRASS .015 THK, HALF HARD.
2. FINISH: COPPER STRIKE AND SOLDER PLATE TO 100-300 μ IN THICKNESS.
3. CORNERS SHOWN SHARP MAY BE .005 R.

UNLESS OTHERWISE SPECIFIED
DIMENSIONS ARE IN INCHES
TOLERANCES ARE:

FRACTIONS	DECIMALS	ANGLES
± 1/64	XX ± .01	± 1'0
	XXX ± .005	

THIRD ANGLE PROJECTION



DO NOT SCALE DRAWING

APPROVALS		DATE
DRAWN C HUTCHINS		6/91
CHECKED:		
ISSUED:		
APP'D:		



**CROSSFLOW
GROUNDING CLIP**

SIZE	PSCM NO.	DWG. NO.	REV.
B	67131	05812	5
SCALE 4X		SHEET 1 OF 1	