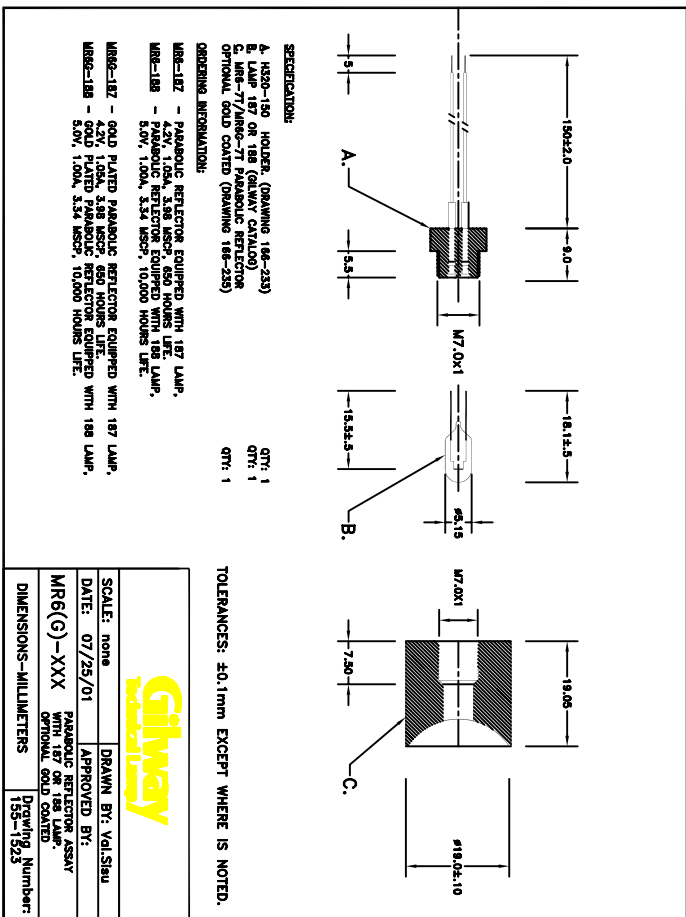
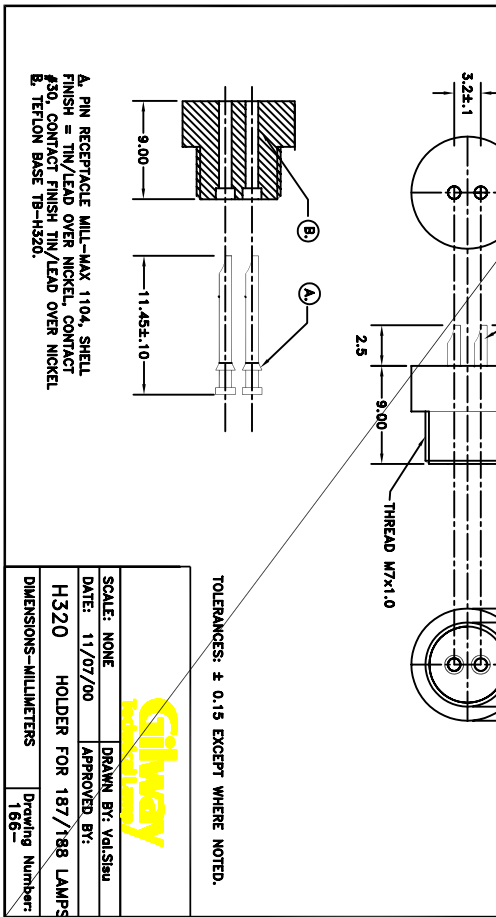


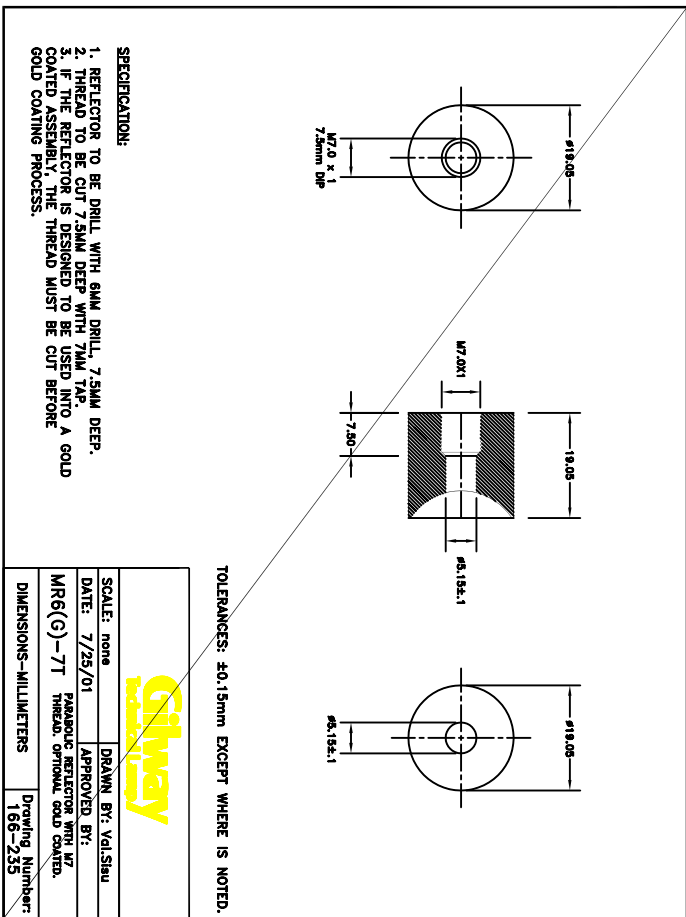
<b>Gitway</b>	
SCALE: 4:1	DRAWN BY: Val.Siu
DATE: 05/15/01	APPROVED BY:
TB-H320	Teflon Base for H320
DIMENSIONS-MILLIMETERS	Drawing Number:



<b>Gitway</b>	
SCALE: none	DRAWN BY: Val.Siu
DATE: 07/25/01	APPROVED BY:
MR6(G)-XXX	PARABOLIC REFLECTOR ASSY WITH 187 OR 188 LAMP.
DIMENSIONS-MILLIMETERS	Drawing Number: 155-1923



<b>Gitway</b>	
SCALE: NONE	DRAWN BY: Val.Siu
DATE: 11/07/00	APPROVED BY:
H320	HOLDER FOR 187/188 LAMPS
DIMENSIONS-MILLIMETERS	Drawing Number: 166-235



<b>Gitway</b>	
SCALE: none	DRAWN BY: Val.Siu
DATE: 7/25/01	APPROVED BY:
MR6(G)-7T	PARABOLIC REFLECTOR WITH M7 THREAD, OPTIONAL GOLD COATED.
DIMENSIONS-MILLIMETERS	Drawing Number: 166-235

**Gitway**

**Gitway**

- SPECIFICATIONS:**
- A. MR6-187 HOLDER (DRAWING 186-233)
  - B. MR6-187 PARABOLIC REFLECTOR (DRAWING 186-233)
  - C. MR6-7T/MR6-7T PARABOLIC REFLECTOR OPTIONAL GOLD COATED (DRAWING 186-233)
- OPERATING INFORMATION:**
- MR6-187 - PARABOLIC REFLECTOR EQUIPPED WITH 187 LAMP, 4.2V, 1.05A, 3.98 HRS LIFE.
  - MR6-188 - PARABOLIC REFLECTOR EQUIPPED WITH 188 LAMP, 4.2V, 1.05A, 3.98 HRS LIFE.
  - MR6-189 - PARABOLIC REFLECTOR EQUIPPED WITH 189 LAMP, 5.0V, 1.00A, 3.34 HRS LIFE.
  - MR6-190 - PARABOLIC REFLECTOR EQUIPPED WITH 187 LAMP, 4.2V, 1.05A, 3.98 HRS LIFE.
  - MR6-191 - PARABOLIC REFLECTOR EQUIPPED WITH 188 LAMP, 4.2V, 1.05A, 3.98 HRS LIFE.
  - MR6-192 - PARABOLIC REFLECTOR EQUIPPED WITH 189 LAMP, 5.0V, 1.00A, 3.34 HRS LIFE.

- SPECIFICATIONS:**
1. REFLECTOR TO BE DRILL WITH 6MM DRILL, 7.5MM DEEP.
  2. THREAD TO BE CUT 7.5MM DEEP WITH 7MM TAP.
  3. IF THE REFLECTOR IS DESIGNED TO BE USED INTO A GOLD COATED ASSEMBLY, THE THREAD MUST BE CUT BEFORE GOLD COATING PROCESS.