

# B27C

## FEMALE HEADER PROFILE : 7.0mm SMT TYPE

PITCH: 2.54mm

### SPECIFICATIONS

#### Material

Insulator : Nylon 6T, glass reinforced, rated UL 94V-0

Contact : Phosphor Bronze

#### Electrical

Current Rating : 1 Amp DC

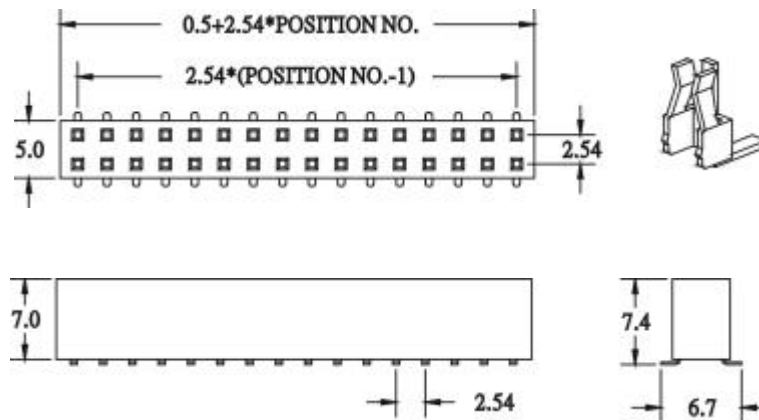
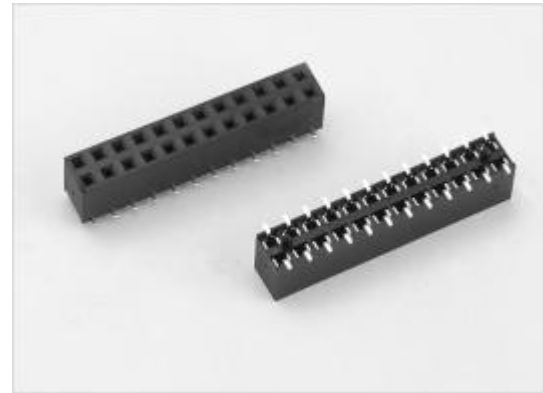
Contact Resistance : 30 mΩ max.

Insulation Resistance : 3000 MΩ min.

Dielectric Withstanding Voltage : 500V AC for 1minute

Operating Temperature : -40°C to +105°C

• Mating Suggestion : C17, C18 series.



### HOW TO ORDER:

B27C -  1 -  2 -  3 -  4

| 1.NO. OF CONTACT       | 2.CONTACT MATERIAL | 3.CONTACT PLATING   | 4.INSULATOR COLOR |
|------------------------|--------------------|---|-------------------|
| DUAL ROW<br>2*2 - 2*40 | B: PHOSPHOR BRONZE | T: TIN PLATED<br>S: SELECTIVE<br>G: GOLD FLASH<br>A: 5u" INCH GOLD<br>B: 10u" INCH GOLD<br>C: 15u" INCH GOLD<br>D: 30u" INCH GOLD | 1. BLACK          |