

# Fast Recovery High Voltage Silicon Rectifiers



Part Number	Repetitive peak reverse voltage	Average forward current	Non-repetitive peak surge current	Maximum forward voltage drop (at 10mA, Ta = 25°C)	Maximum reverse current, repetitive (at VRRM, Ta = 25°C)	Maximum Junction Capacitance (at VRRM=0V, Ta = 25°C)
	VRRM kV	Io* mA	IFSM** A	VFM Volts	IRRM µA	@ 1MHz pf
CS57-04A	4	25	1.0	15	1	2
CS54-06A	6			24		
CS54-08A	8			30		
CS52-10A	10	10	0.5	36		1
CS52-12A	12			45		
CS52-14A	14			51		
CS53-16A	16			60		
CS53-18A	18			66		
CS53-20A	20			75		
CS56-24	24			75		

Special Notes:

\*Single phase, half sine wave in oil bath or filled epoxy at ambient temperature = 25°C.

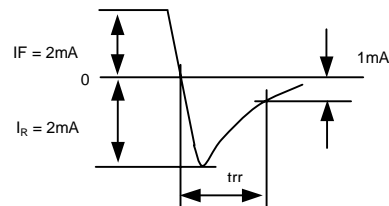
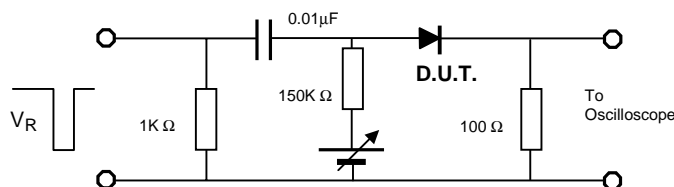
\*\*1/2 cycle, 60Hz at full load.

Storage and Operating Junction Temperature, Tj = -65°C to +150°C.

Packaging: Bulk or tape & reel available (please specify).

Reverse Recovery Time = 80nsec max. @ Ta = 25°C, IF = 2mA, IR = 1 mA. ("A" type)

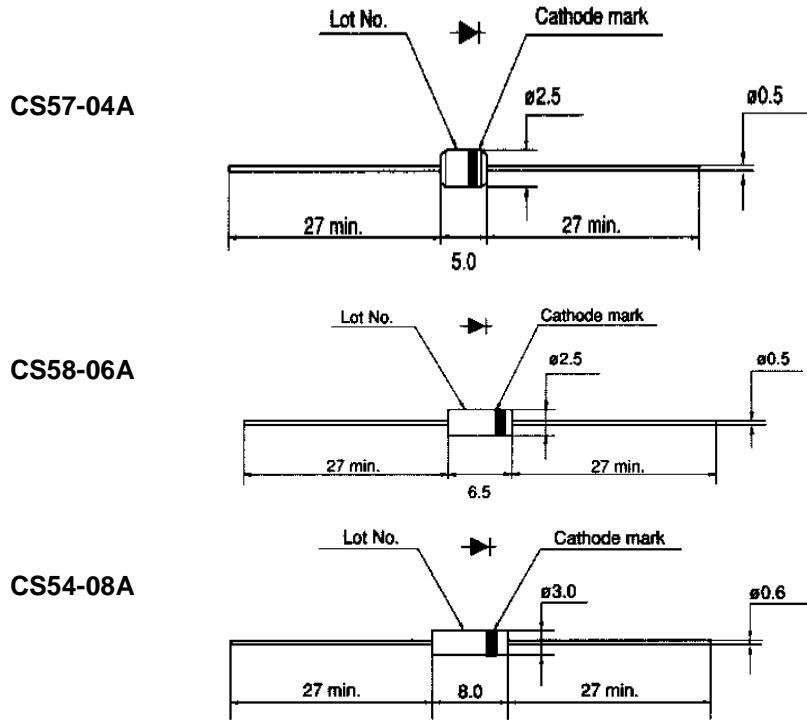
Reverse Recovery Time = 100nsec max. @ Ta = 25°C, IF = 2mA, IR = 1 mA. (Non "A" type)



## Collmer Semiconductor Inc.

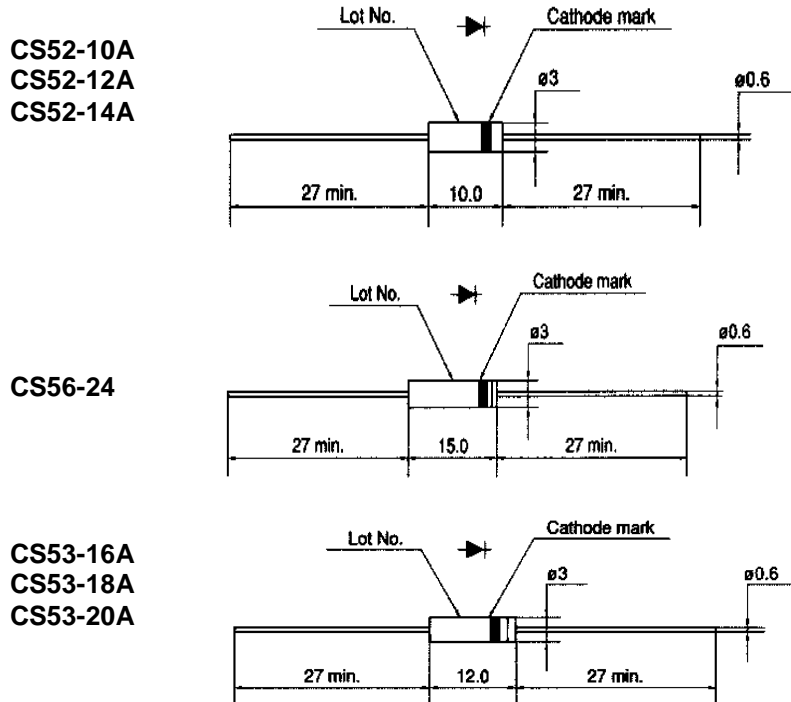
PO Box 702708 • DALLAS, TEXAS 75370 • PH 972/733-1700 • FAX 972/380-2126  
e-mail: [sales@collmer.com](mailto:sales@collmer.com) / [www.collmer.com](http://www.collmer.com)

# Diode Dimensions and Markings



Cathode mark (White)

V <sub>RRM</sub>	Type	Mark
4kV	CS57-04A	▶▶▶
6kV	CS58-06A	▶▶▶▶
8kV	CS54-08A	▶▶▶▶▶



Cathode mark (White)

V <sub>RRM</sub>	Type	Mark
10kV	CS52-10A	◆◆◆
12kV	CS52-12A	◆◆◆◆
14kV	CS52-14A	◆◆◆◆◆
16kV	CS53-16A	●●●●
18kV	CS53-18A	~
20kV	CS53-20A	~
24kV	CS56-24	■

## Collmer Semiconductor Inc.

PO Box 702708 • DALLAS, TEXAS 75370 • PH 972/733-1700 • FAX 972/380-2126

e-mail: [sales@collmer.com](mailto:sales@collmer.com) / [www.collmer.com](http://www.collmer.com)