

Features

- Thick film technology
- Fail safe
- Protection to ITU-T K.20

Applications

- Analog Line Cards
- CPE (Customer Premises Equipment)
- DDS (Digital Data Systems)
- DLC (Digital Loop Carriers)
- T1/T3 Transmission Lines
- ISDN

D22B Line Feed Resistors w/Resettable Polymer PTC & Overvoltage Protectors

Product Characteristics

Resistor Tolerance±1 %
 Polswitches Matched to2.0 ohms
 Rating250 V, 1.0 A
 Trip Time @ 1 A1.1 seconds @ 20 °C
 Trip Current125 mA @ 25 °C

Environmental Characteristics

TESTS PER MIL-STD-202

Humidity103B
 Solderability208D
 Thermal Shock107B
 Resistance to Solvents215
 Resistance to Solder Heat210D
 FlammabilityUL 94V-0
 IEC 695-2-2

Functional Characteristics

ITU-T K.20
 Lightning Surge1 KV
 Power Induction600 Vrms
 Power Contact230 Vrms
 UL 497A

Physical Characteristics

Body StyleOpen Frame SIP
 Body Material96% Alumina
 Lead Frame MaterialCopper, solder coated
 Standard Parts Available Off the Shelf20, 30, 50, 100 ohms

How To Order

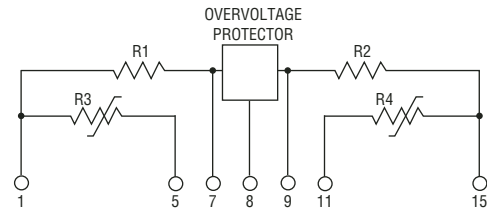
D22B 100AA

Model _____
 (D22B = LFR w/Resettable Polymer PTC & Overvoltage Protectors)

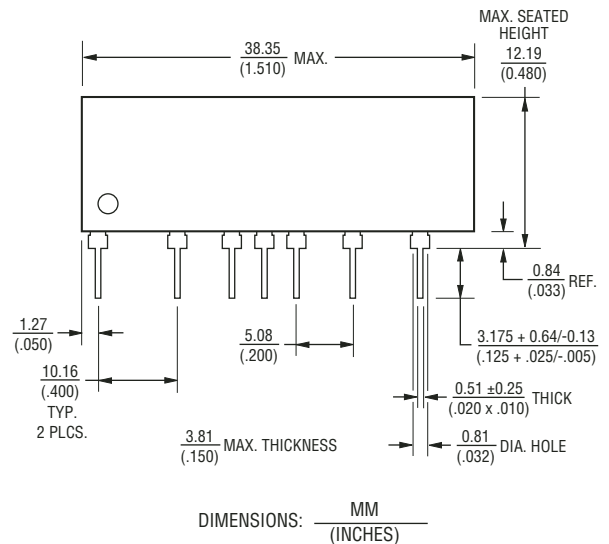
- Resistor Tolerance _____
- 020AA = 20 ohms
 - 030AA = 30 ohms
 - 050AA = 50 ohms
 - 100AA = 100 ohms

Custom values available; contact factory.

Circuit Schematic



Product Dimensions



Circuit Protection Division

Asia-Pacific:

Tel: +886-2 2562-4117
 Fax: +886-2 2562-4116

Europe:

Tel: +41-41 768 5555
 Fax: +41-41 768 5510

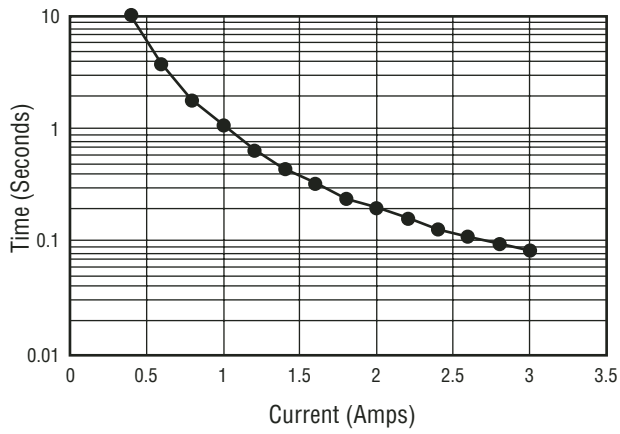
The Americas:

Tel: +1-951 781-5500
 Fax: +1-951 781-5700

www.bourns.com

Trip Characteristics

Time to Trip



Hold Current vs Temperature

