

# Monolithic crystal filter

## MQF45.0-1200/14



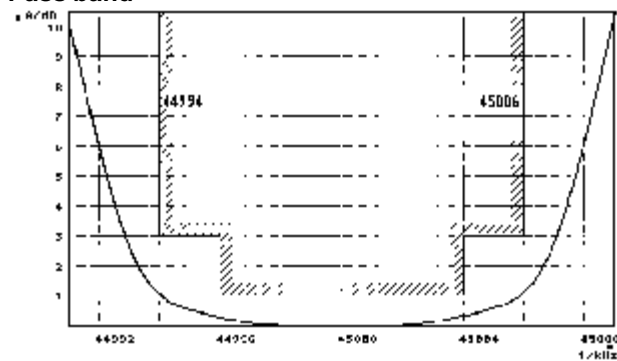
### Application

- 4 pol filter
- i.f.- filter
- use in mobile and stationary transceivers

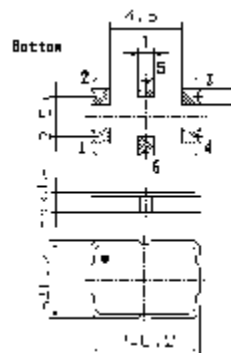
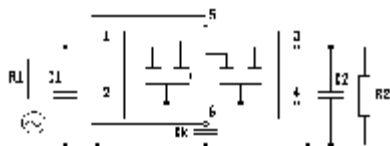
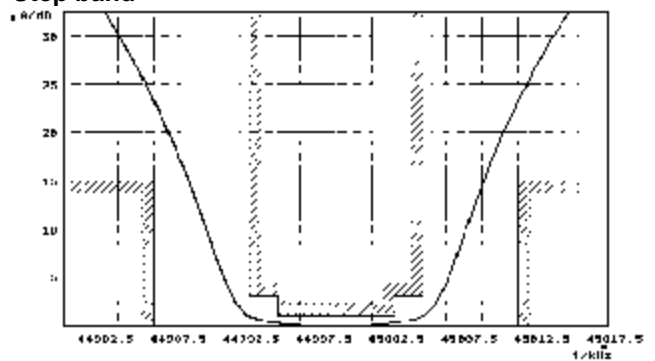
Limiting values		Unit	Value
Center frequency	$f_0$	MHz	45.0
Insertion loss		dB	$\leq 2.5$
Pass band at 3.0 dB		kHz	$\pm 6.00$
Ripple in pass band	$f_0 \pm 4.00$ kHz	dB	$\leq 1.0$
Stop band attenuation	$f_0 \pm 12.5$ kHz	dB	$\geq 15$
Alternate attenuation	$f_0 - 910$ kHz	dB	$> 80$
IMD at input -15 dBm		dB	$> 90$
Terminating impedance Z			
R1    C1		Ohm/pF	550    3.0
R2    C2		Ohm/pF	550    3.0
Coupling capacitance	Ck	pF	12.5
Operating temp. range		°C	-30... +60

### Characteristics MQF45.0-1200/14

#### Pass band



#### Stop band



- Pin connections:
- 1 Input
  - 2, 4 Ground
  - 3 Output
  - 5 and 6 Coupling capacitance