

Monolithic crystal filter

MQF45.0-3800/09



Application

- 4 pol filter
- i.f.- filter
- use in mobile and stationary transceivers

Limiting values

		Unit	Value
Center frequency	f_0	MHz	45.0
Insertion loss		dB	≤ 3.0
Pass band at 6.0 dB		kHz	± 19.00
Ripple in pass band	$f_0 \pm 19.00$ kHz	dB	\leq Gaussian
Stop band attenuation	$f_0 \pm 38$ kHz	dB	≥ 25
	$f_0 \pm 75$ kHz	dB	> 50
Spurious responses		dB	> 15
Group delay distortion	$f_0 \pm 19$ kHz	μ s	< 15

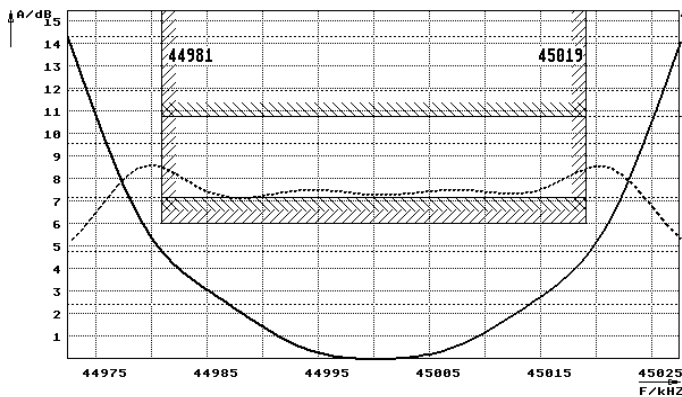
Terminating impedance Z

R1 C1	Ohm/pF	900 1	
R2 C2	Ohm/pF	800 2	
Coupling capacitance	Ck	pF	6.5

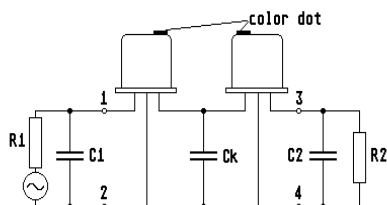
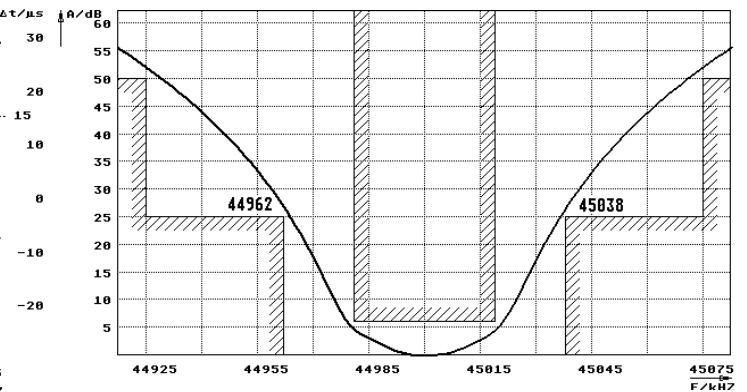
Operating temp. range	$^{\circ}$ C	-20... +70
-----------------------	--------------	------------

Characteristics MQF45.0-3800/09

Pass band



Stop band



Pin connections: 1 Input
2 Input-E
3 Output
4 Output-E

