

Monolithic crystal filter

MQF 6.0-0300/01



Application

- 2 pol filter
- i.f.- filter
- use in mobile and stationary transceivers

Limiting values

		Unit	Value
Center frequency	f_0	MHz	6.0
Insertion loss		dB	≤ 3.0
Pass band at 3.00 dB		kHz	± 1.5
Ripple in pass band	$f_0 \pm 1.2$ kHz	dB	≤ 2.0
Stop band attenuation	$f_0 \pm 12.5$ kHz	dB	≥ 18
Alternate attenuation	$f_0 \pm 1.5...5$ MHz	dB	> 65

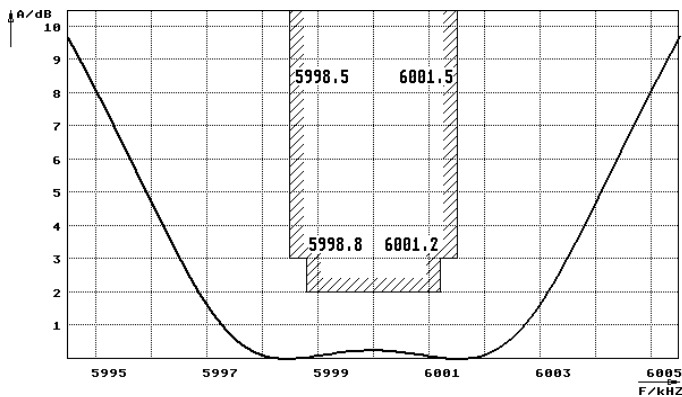
Terminating impedance Z

R1 C1	Ohm/pF	5500 -2.0
R2 C2	Ohm/pF	5500 -2.0

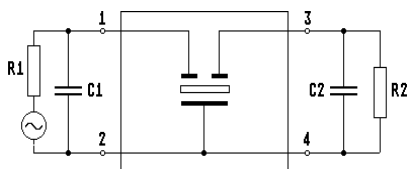
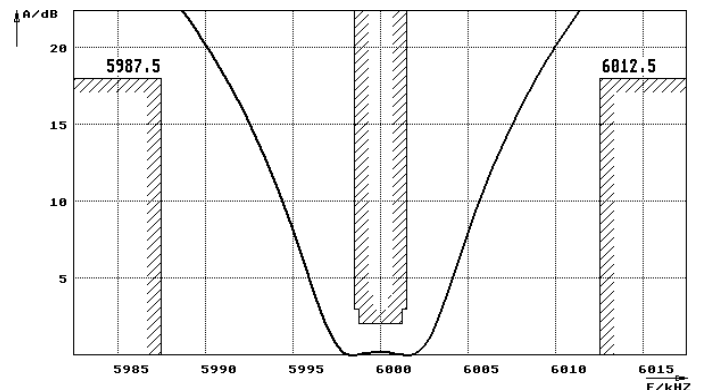
Operating temp. range	° C	-20... +70
-----------------------	-----	------------

Characteristics MQF 6.0-0300/01

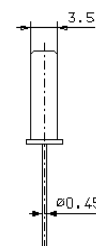
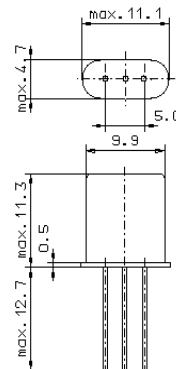
Pass band



Stop band



Pin connections: 1 Input
2 Input-E
3 Output
4 Output-E



GH3