

# Monolithic crystal filter

## MQF70.0-2000/07



### Application

- 4 pol filter
- i.f.- filter
- use in mobile and stationary transceivers

### Limiting values

		Unit	Value
Center frequency	$f_0$	MHz	70.0
Insertion loss		dB	$\leq 3.0$
Pass band at 3.0 dB		kHz	$\pm 10.00$
Ripple in pass band	$f_0 \pm 8.00$ kHz	dB	$\leq 2.0$
Stop band attenuation	$f_0 \pm 40$ kHz	dB	$\geq 35$
Alternate attenuation	$f_0 \pm 910$ kHz	dB	$> 70$
Spurious responses		dB	$> 30$

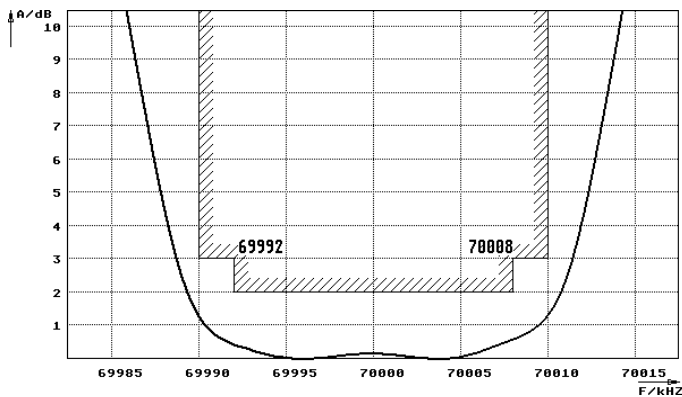
### Terminating impedance Z

R1    C1		Ohm/pF	3500    -0.70
R2    C2		Ohm/pF	3500    -0.70
Coupling capacitance	Ck	pF	-1.0

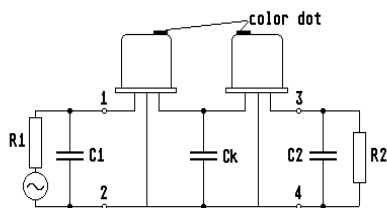
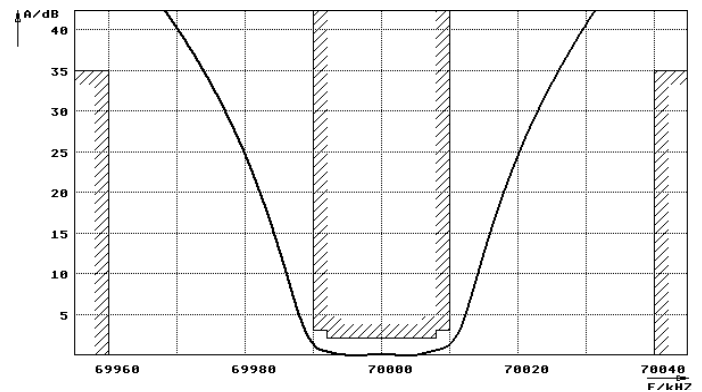
Operating temp. range		° C	-20... +70
-----------------------	--	-----	------------

### Characteristics MQF70.0-2000/07

#### Pass band



#### Stop band



Pin connections: 1 Input  
2 Input-E  
3 Output  
4 Output-E

