

# Crystal filter

## QF172.955-3500/07



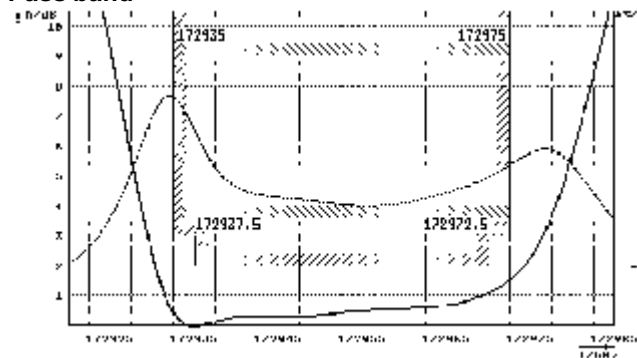
### Application

- 4 pol filter
- i.f.- filter
- use in mobile and stationary transceivers

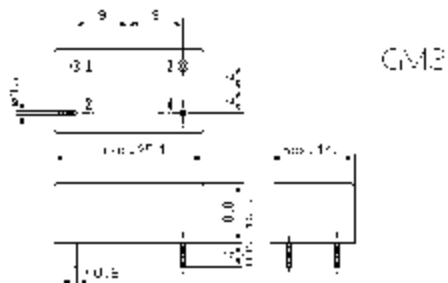
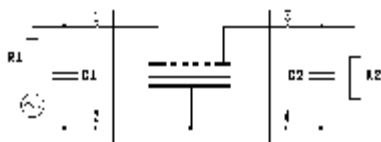
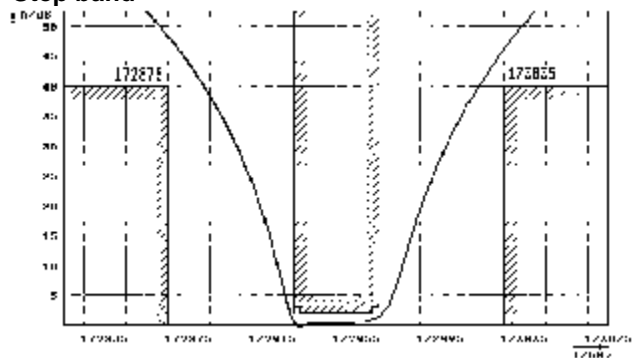
Limiting values		Unit	Value
Nominal frequency	$f_0$	MHz	172.955
Insertion loss		dB	< 7.0
Pass band at 3.0dB		kHz	$\pm > 20$
Ripple in pass band	$f_0 \pm 17.5$ kHz	dB	< 2.0
Stop band attenuation	$f_0 \pm 80$ kHz	dB	> 40
	$f_0 \pm 455$ kHz	dB	> 55
Alternate attenuation		dB	> 55
Spurious response		dB	> 14
Group delay distortion	$f_0 \pm 20$ kHz	$\mu$ s	< 25
IMD at 0 dBm input level	173.055; 173.155 MHz	dB	> 58
Nominal drive level (max.)		dBm	0
Max. allowed drive level		dBm	15
Terminating impedance Z			
R1  C1		Ohm/pF	50    0
R2  C2		Ohm/pF	50    0
Operating temp. range		$^{\circ}$ C	-20... +70
Operable temp. range		$^{\circ}$ C	-40... +85

### Characteristics QF172.955-3500/07

#### Pass band



#### Stop band



- Pin connections:
- 1 Input
  - 2 Ground-Input
  - 3 Output
  - 4 Ground-Output