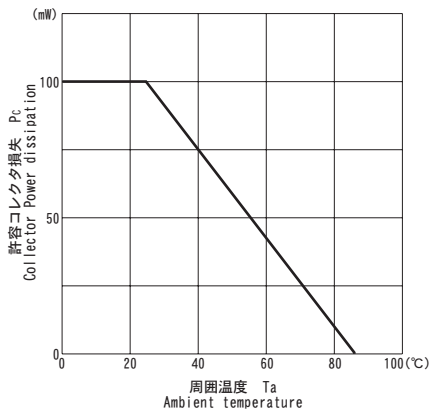
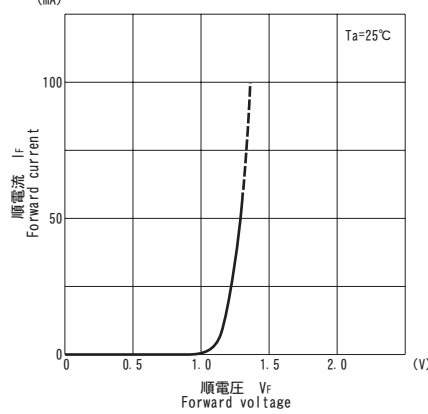




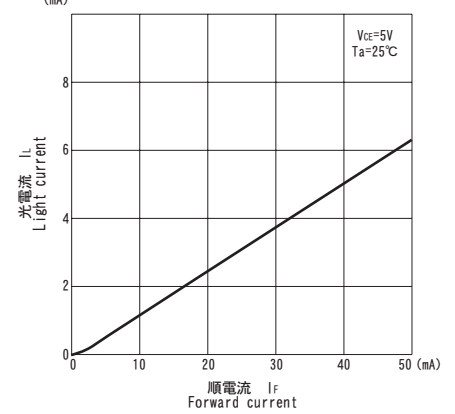
■許容コレクタ損失/周囲温度  $P_c/T_a$



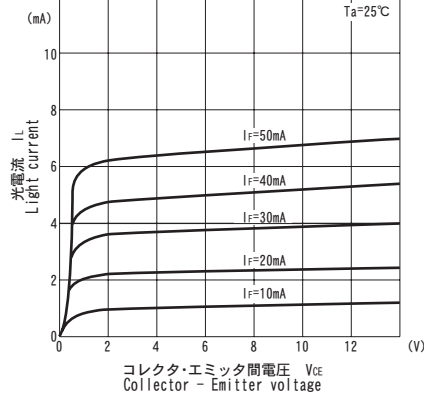
■順電流/順電圧特性  $I_f/V_f$



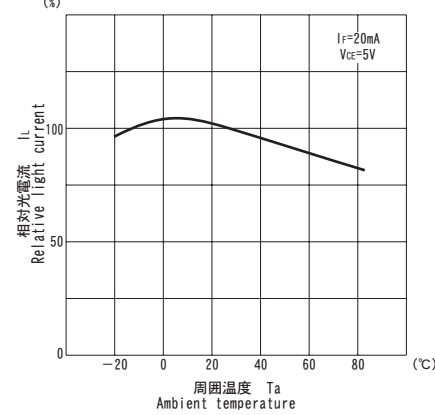
■光電流/順電流特性  $I_L/I_f$



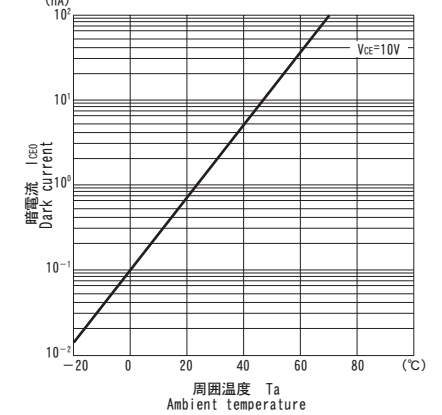
■光電流/コレクタ・エミッタ間電圧特性  $I_L/V_{CE}$



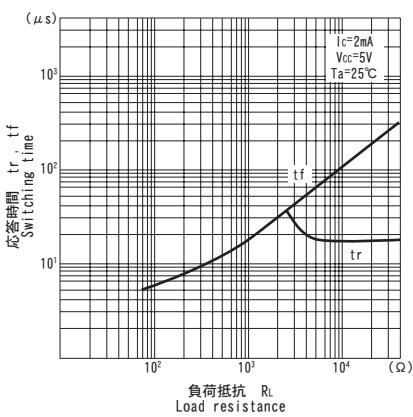
■相対光電流/周囲温度特性  $I_L/T_a$



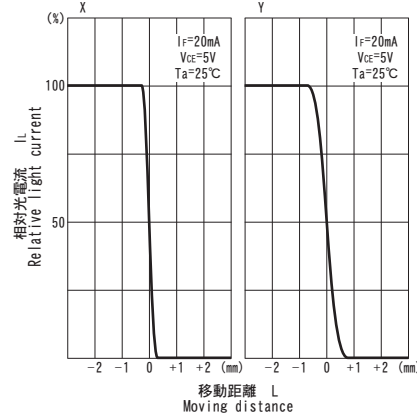
■暗電流/周囲温度特性  $I_{CE0}/T_a$



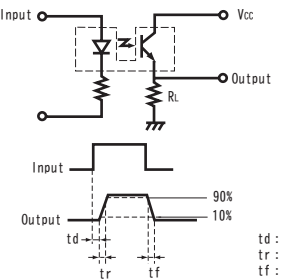
■応答時間/負荷抵抗特性  $t_r, t_f/R_L$  ※1



■位置検出特性 ※2



※1 Switching time measurement circuit



※2 Method of measuring position detection characteristic

